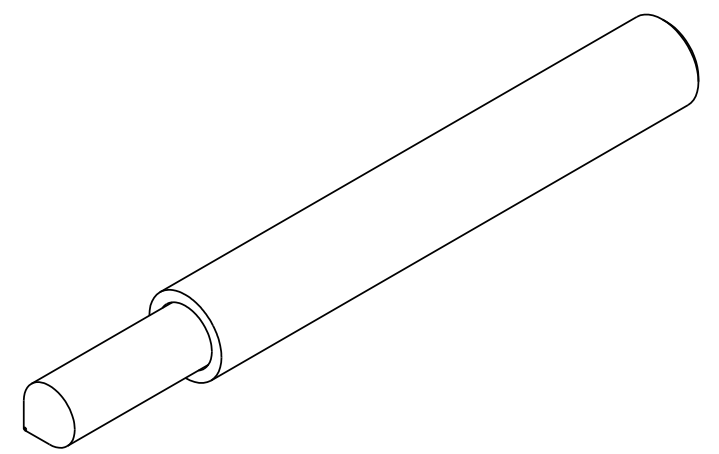


1 2 3 4 5 6 7 8



THIS DRAWING IS THE PROPERTY OF APTECH AND IS SUBMITTED IN CONFIDENCE FOR USE IN CONNECTION WITH AN EXISTING, PENDING, OR FUTURE TRANSACTION BETWEEN US. THIS MATERIAL SHALL NOT BE REPRODUCED OR PUBLISHED IN ANY FORM OR DISCLOSED TO ANYONE OUTSIDE OF YOUR EMPLOY WITHOUT PRIOR WRITTEN CONSENT OF APTECH. THE SUBMISSION OF THIS DRAWING IS NOT INTENDED TO CONSTITUTE PUBLICATION OF SAME.

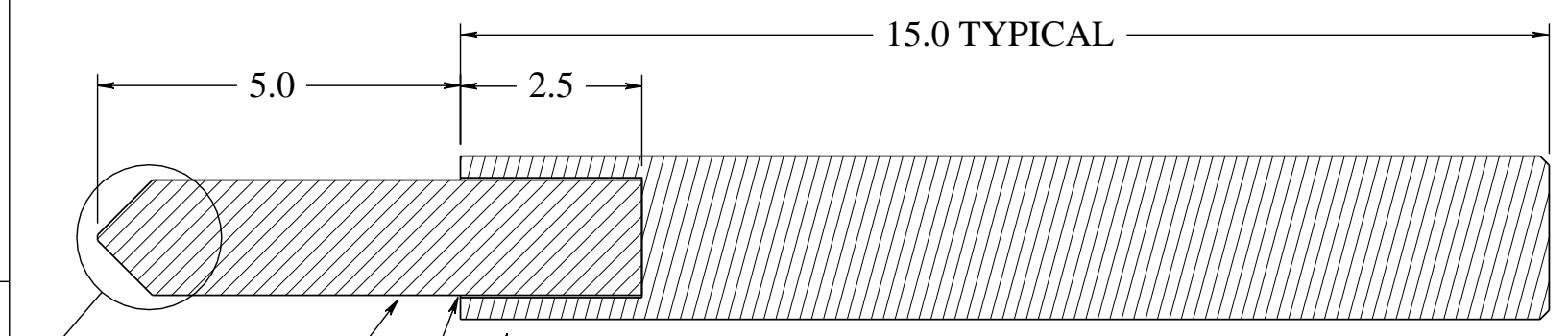
REVISION HISTORY		
REV	DESCRIPTION	DATE

PRODUCT FEATURES

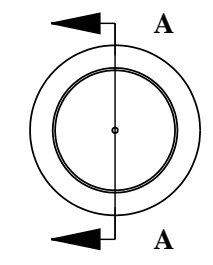
- 1) OPTIONAL OVERALL LENGTH
- 2) OPTIONAL CONE ANGLE (60° TO 30°)
- 3) OPTIONAL TRUNCATION DIAMETER (ie 0.05 TO 0.125)
- 4) OPTIONAL MATERIAL (HfC, NbC, TaC, ZrC)

D
C
B
A

D
C
B
A



Section A-A



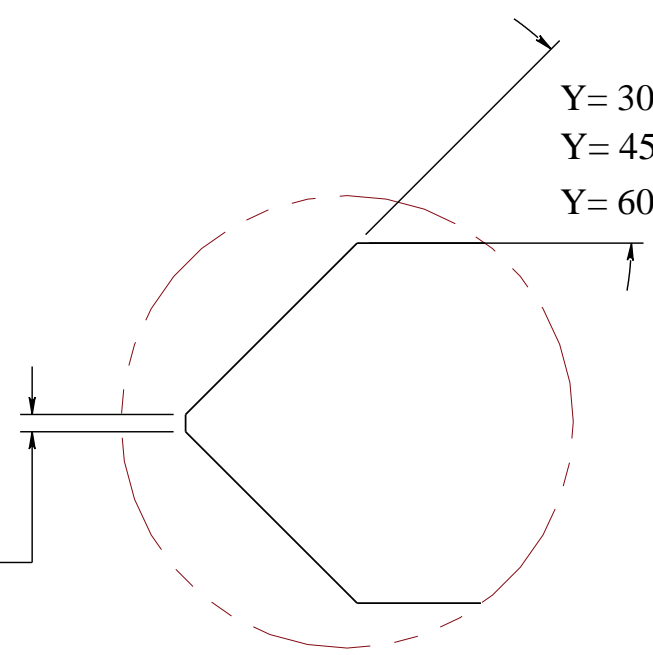
HfC(100)

BRAZE HERE

Mo ROD

Y= 30°
Y= 45°
Y= 60°

0.05 - 0.125



Detail A

DIMENSIONS ARE IN MM

DIMENSIONS IN INCHES UNLESS SPECIFIED CHECKED DEFAULT TOLERANCES INCHES .xxx ± .005 .x ± .030 .xx ± .010 x' ± 30' MM .xx ± .1 x ± .5 .x ± .2 x' ± 0.5'	DRAWN	DATE	
	CHECKED		
	ALL MACH SURFACES 63/ CONCENTRICITY .005 TIR DEBURR AND BREAK ALL SHARP EDGES DO NOT SCALE DRAWING		HfC ARC LAMP CATHODE
MATERIAL	SIZE	PART NO.	REV
	B		x1
	SCALE	SHEET	1 of 1

1 2 3 4 5 6 7 8